



## The West Bridgford School

Thank you so much for choosing  
to support Pasic



# Who are we?

Pasic was set up in 1977 to help families experiencing childhood cancer.

**Vision** An East Midlands where every family has the support they need to live life with, and beyond, childhood cancer.

**Mission** We go above and beyond to protect childhood and family life from the devastating effects of cancer.

We provide practical, emotional and financial support for families to ease the challenges that cancer brings.

We're a small but mighty team of 11 staff, supported by a board of committed trustees and amazing volunteers.





We currently support a  
total of

**507**

families

We support the **WHOLE** family including parents and siblings - helping families cope with the day to day trauma of childhood cancer to make life a little easier and more fun!

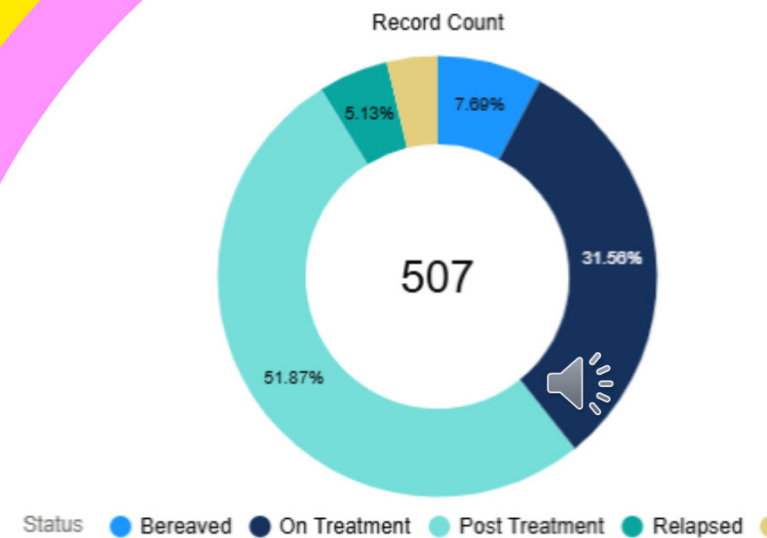


# Who we support

We support families at every stage of their cancer journey.

From the day of diagnosis to 3 years post-treatment.

We're there to support families in all eventualities through the challenges cancer brings.



# On the ward



# Making life better

in hospital and at home



Cinema  
Tickets

Coffee shop &  
Hospital café  
vouchers

Teen  
Pick-Me-Up Packs

Comfort  
Bags

Christmas  
Eve  
Boxes

Toys, Books &  
Crafts handed  
out at the  
bedside

Amazon, &  
gaming  
vouchers

Mood  
Bears



# Financial support

Helping with extra costs of childhood cancer

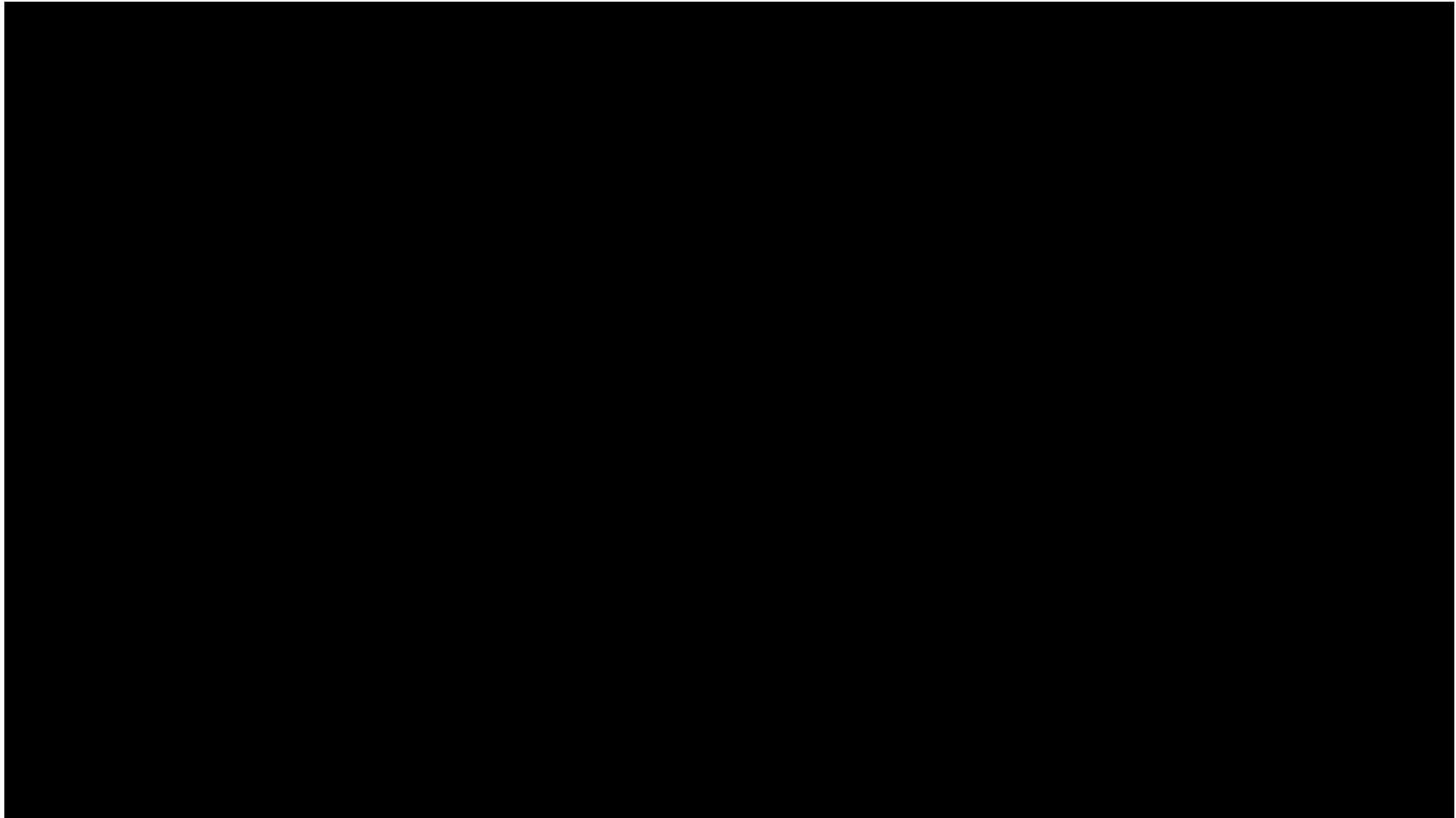
## Family grants

Including emergency hardship grants, travel support, making memory grants and compassionate grants. Easing the money worries of nearly 200 families.

## Supermarket vouchers

to help 220 families put food on the table.





# Psychological support

Counselling and therapy sessions help families process the trauma they've been through. Includes play/drama/art therapy for children with cancer and their siblings. Talking therapy and bereavement support.

*“ Asking for help was one of the hardest things for me, but counselling gave me the power to regain control, deal with the situation, and help my son through the treatment. ”*



# Fun Days Out

A range of outings and activities For  
the whole family



Spring &  
Christmas  
Parties

Alton  
Towers

May Half Term  
including,  
Twinlakes &  
Twycross Zoo

Santa Steam  
Train

Teen Trips including  
Theatre &  
Silverstone Museum

Pantomimes

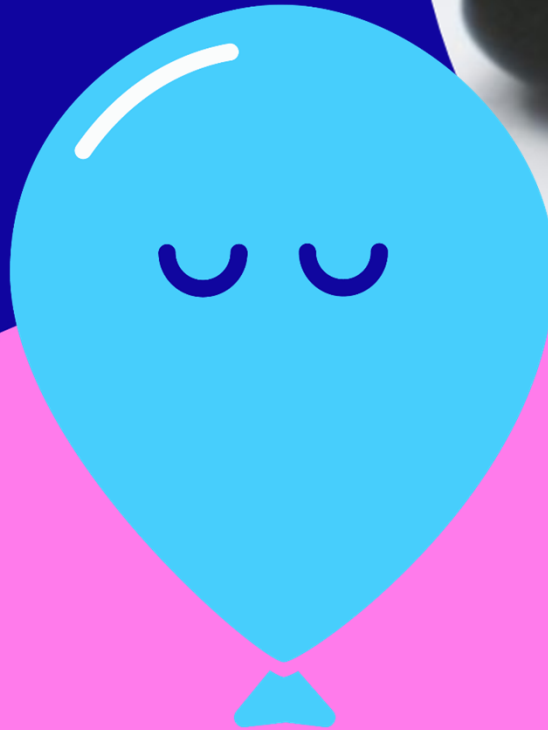
Basic Picnics



# Making Memories

We help families create lasting memories with special keepsake gifts, personalised treats and making memories experiences when their child is palliative.

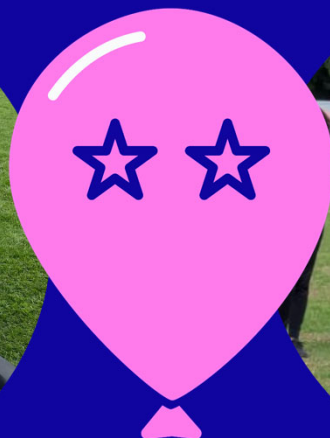
- Fingerprint charms and memory teddy bears
- Polaroid cameras
- Support for all the family.
- Compassionate grants
- Trips and outings for siblings
- Counselling
- Signposting



# Christmas



# Summer picnics



# Teen trips



# Alton Towers



“ Thank you so much for the opportunity to enjoy such a great time before his next chemo which is starting today. He’s still full of emotions and just can’t stop talking about all the experience he gained yesterday ”



“ It’s made me chuffed to bits that Charlie had an exciting time with us all together as often we are separated for long periods with Jasmine’s several, long hospital admissions in the past and still more to come ”





## Flynn's story

Flynn was diagnosed with Bilateral Retinoblastoma at just 7 months old.

PASIC has given memorable experiences for Flynn and his family—trips on Santa trains, Halloween trails, and the Pasic Party where Flynn didn't want to leave the dance floor! These outings provided a much-needed break from treatment and hospital stays.

The Pasic party: *It's the one place I don't feel nervous about when Flynn is upset etc, I just feel like everyone else there gets it and knows and there's no judgement.*

”

# Thank you for listening!

